

**TAN15 Floodrisk**

- TAN15\_ZoneC2
- TAN15\_ZoneC1
- TAN15\_ZoneB

**Conservation - Landscape**

Ezy\_Flintshire\_TPOs

- Region
- Region
- Region
- Region
- Region
- Region
- Region

- NRW\_AONB
- HLCA\_Clwyd\_Powys
- Historic\_Landscapes
- Ancient\_Woodlands
- Open\_Country\_CRoW
- Common\_Land\_Flintshire

**Conservation - Environment**

- Wildlife\_Sites
- NRW\_SSSI
- NRW\_SPA
- NRW\_SAC
- NRW\_Ramsar

**HyNet Final DCO Order Limit**

- Hynet\_Order\_Limits\_20072\_022

**HyNet BVS AGI**

- DF3\_FlintAGI\_toFlintConnection
- DF3\_StanlowAGI\_To\_Flint\_AGIPip
- DF3\_FlintConnection\_to\_PointOf







TAN15 Floodrisk  
TAN15\_ZoneC2  
TAN15\_ZoneC1  
TAN15\_ZoneB

Conservation - Landscape  
Ezy\_Flintshire\_TPOs  
Region  
Region  
Region  
Region  
Region  
Region  
Region  
Region  
NRW\_AONB  
HLCA\_Clwyd\_Powys  
Historic\_Landscapes  
Ancient\_Woodlands  
Open\_Country\_CRoW  
Common\_Land\_Flintshire

Conservation - Environment  
Wildlife\_Sites  
NRW\_SSSI  
NRW\_SPA  
NRW\_SAC  
NRW\_Ramsar

HyNet Final DCO Order Limit  
Hynet\_Order\_Limits\_20072  
022

HyNet BVS AGI  
DF3\_FlintAGI\_toFlintConne  
ction  
DF3\_StanlowAGI\_To\_Flint\_  
AGIPip  
DF3\_FlintConnection\_to\_Po  
intOf

© Crown copyright [and database rights], 2021. OS licence 100023386.  
Use of this data is subject to terms and conditions.

Flintshire County Council  
County Hall Raikes Lane  
Mold Flintshire CH7 6NF

FCC LIR Appendix 1.4- HyNet Section 6: Environmental  
Constraints



500 m  
Scale = 1:16616.880



4-April-2023



**TAN15 Floodrisk**

- TAN15\_ZoneC2
- TAN15\_ZoneC1
- TAN15\_ZoneB

**Conservation - Landscape**

Ezy\_Flintshire\_TPOs

- Region
- Region
- Region
- Region
- Region
- Region
- Region

- NRW\_AONB
- HLCA\_Clwyd\_Powys
- Historic\_Landscapes
- Ancient\_Woodlands
- Open\_Country\_CRoW
- Common\_Land\_Flintshire

**Conservation - Environment**

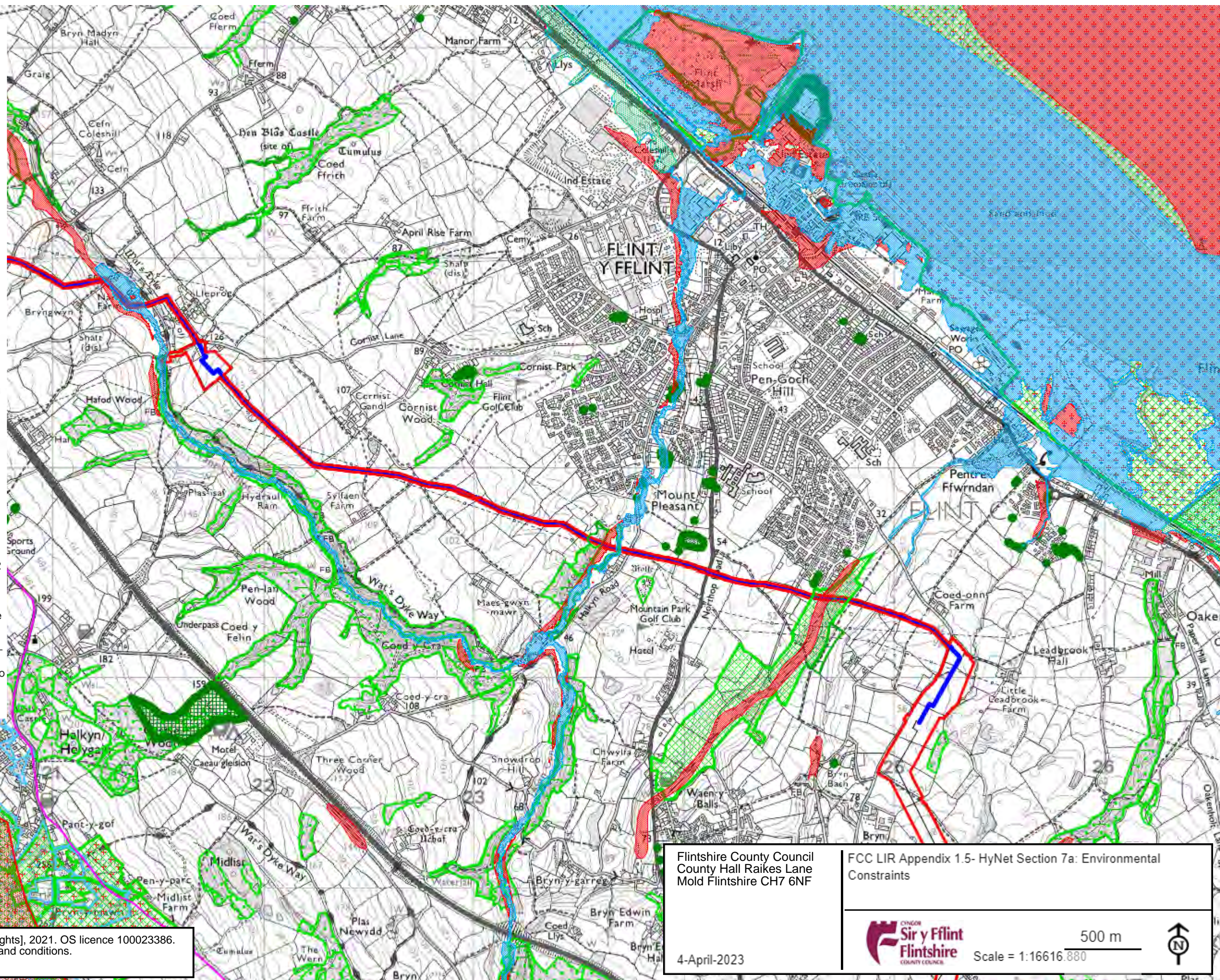
- Wildlife\_Sites
- NRW\_SSSI
- NRW\_SPA
- NRW\_SAC
- NRW\_Ramsar

**HyNet Final DCO Order Limit**

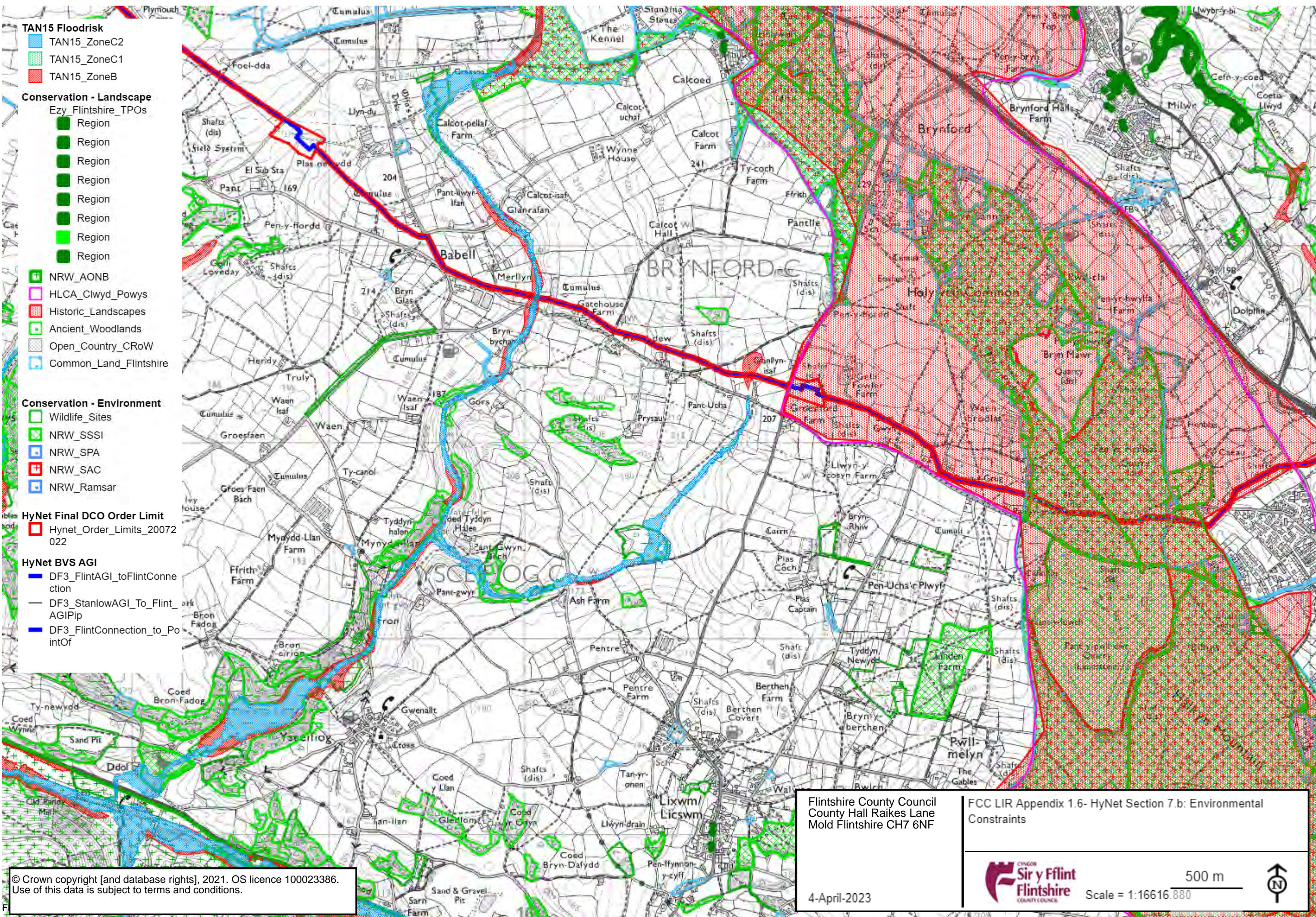
- Hynet\_Order\_Limits\_20072022

**HyNet BVS AGI**

- DF3\_FlintAGI\_toFlintConnection
- DF3\_StanlowAGI\_To\_Flint\_AGIPip
- DF3\_FlintConnection\_to\_PointOf







© Crown copyright [and database rights], 2021. OS licence 100023386.  
Use of this data is subject to terms and conditions.

Flintshire County Council  
County Hall Raikes Lane  
Mold Flintshire CH7 6NF

4-April-2023

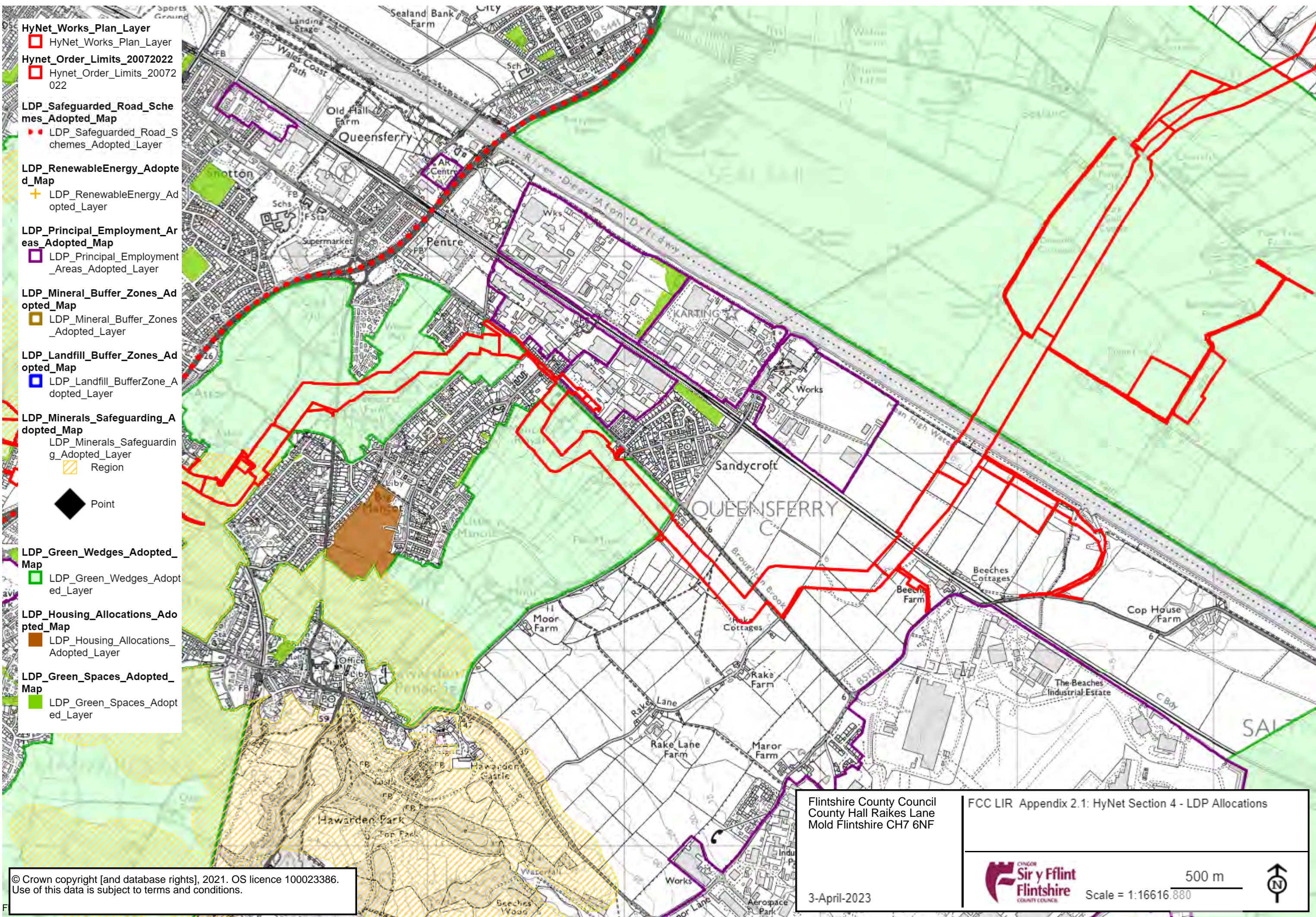
FCC LIR Appendix 1.6- HyNet Section 7.b: Environmental  
Constraints



500 m  
Scale = 1:16616.880







**HyNet\_Works\_Plan\_Layer**

HyNet\_Works\_Plan\_Layer

**Hynet\_Order\_Limits\_20072022**  
Hynet\_Order\_Limits\_20072022

**LDP\_Safeguarded\_Road\_Schemes\_Adopted\_Map**

LDP\_Safeguarded\_Road\_Schemes\_Adopted\_Map

**LDP\_RenewableEnergy\_Adopted\_Map**

LDP\_RenewableEnergy\_Adopted\_Map

**LDP\_Principal\_Employment\_Areas\_Adopted\_Map**

LDP\_Principal\_Employment\_Areas\_Adopted\_Map

**LDP\_Mineral\_Buffer\_Zones\_Adopted\_Map**

LDP\_Mineral\_Buffer\_Zones\_Adopted\_Map

**LDP\_Landfill\_Buffer\_Zones\_Adopted\_Map**

LDP\_Landfill\_BufferZone\_Adopted\_Map

**LDP\_Minerals\_Safeguarding\_Adopted\_Map**

LDP\_Minerals\_Safeguarding\_Adopted\_Map

Region

Point

**LDP\_Green\_Wedges\_Adopted\_Map**

LDP\_Green\_Wedges\_Adopted\_Map

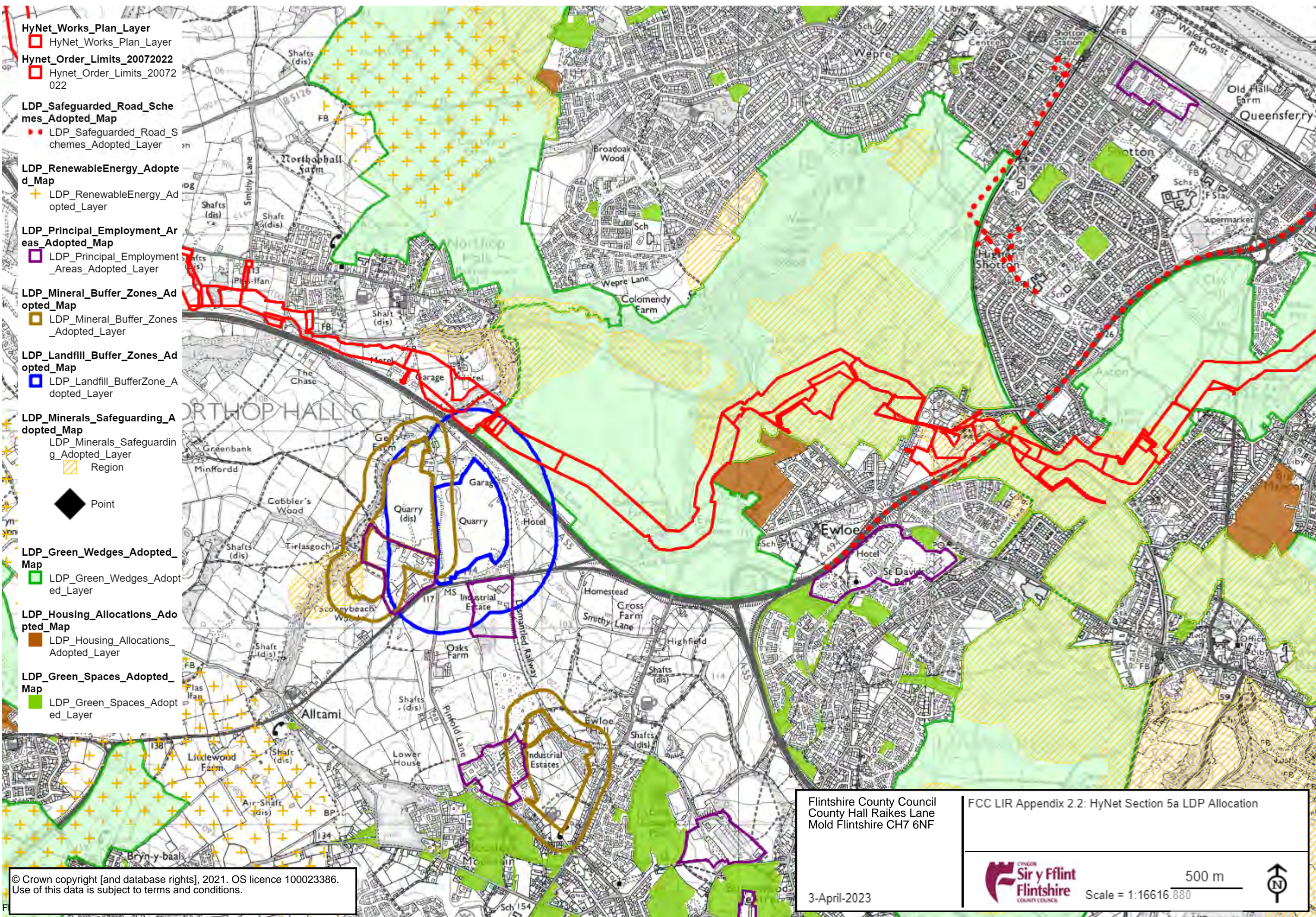
**LDP\_Housing\_Allocations\_Adopted\_Map**

LDP\_Housing\_Allocations\_Adopted\_Map

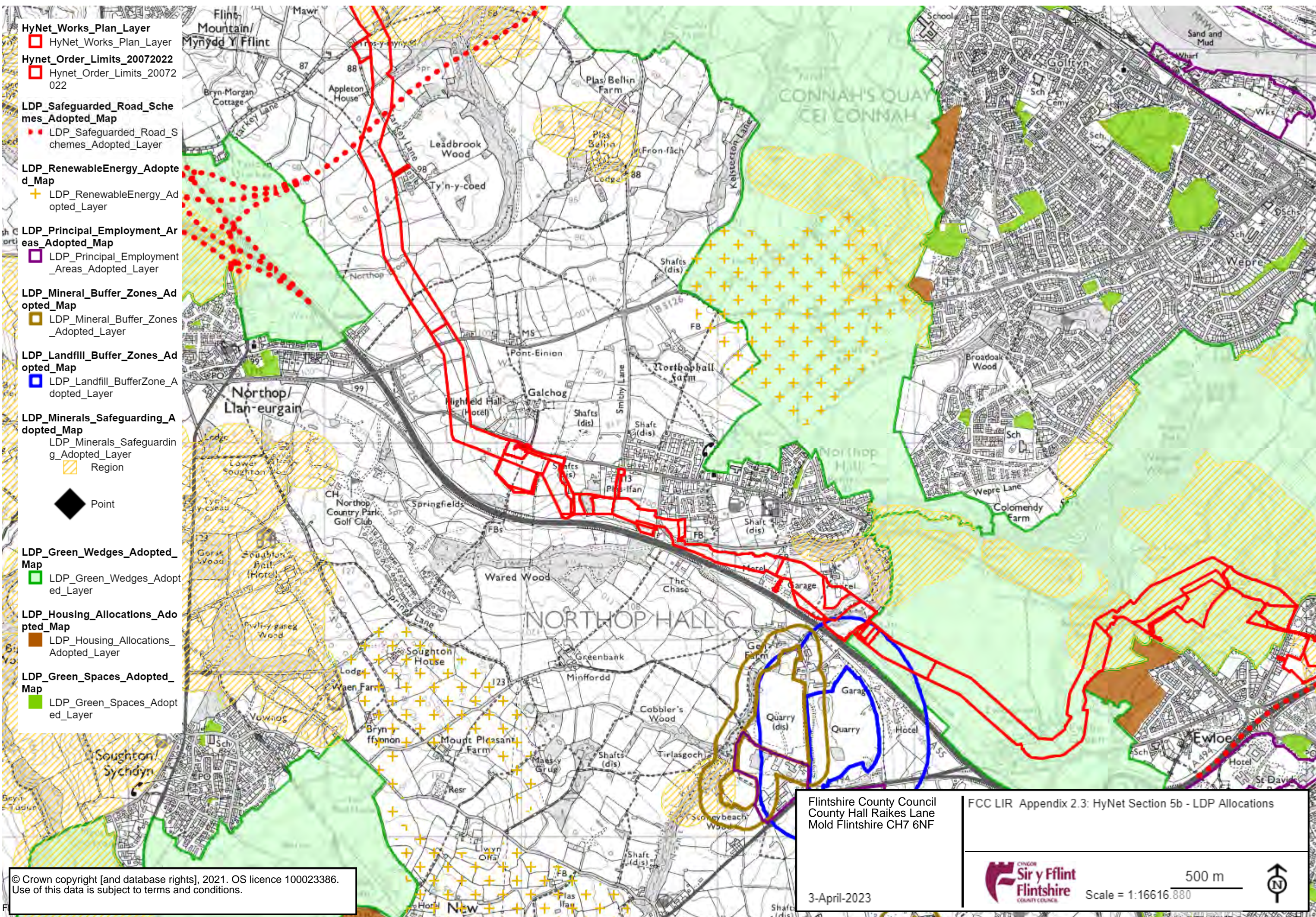
**LDP\_Green\_Spaces\_Adopted\_Map**

LDP\_Green\_Spaces\_Adopted\_Map









**HyNet\_Works\_Plan\_Layer**

HyNet\_Works\_Plan\_Layer

**Hynet\_Order\_Limits\_20072022**

Hynet\_Order\_Limits\_20072022

**LDP\_Safeguarded\_Road\_Schemes\_Adopted\_Map**

LDP\_Safeguarded\_Road\_Schemes\_Adopted\_Map

**LDP\_RenewableEnergy\_Adopted\_Map**

LDP\_RenewableEnergy\_Adopted\_Map

**LDP\_Principal\_Employment\_Areas\_Adopted\_Map**

LDP\_Principal\_Employment\_Areas\_Adopted\_Map

**LDP\_Mineral\_Buffer\_Zones\_Adopted\_Map**

LDP\_Mineral\_Buffer\_Zones\_Adopted\_Map

**LDP\_Landfill\_Buffer\_Zones\_Adopted\_Map**

LDP\_Landfill\_BufferZone\_Adopted\_Map

**LDP\_Minerals\_Safeguarding\_Adopted\_Map**

LDP\_Minerals\_Safeguarding\_Adopted\_Map

**LDP\_Green\_Wedges\_Adopted\_Map**

LDP\_Green\_Wedges\_Adopted\_Map

**LDP\_Housing\_Allocations\_Adopted\_Map**

LDP\_Housing\_Allocations\_Adopted\_Map

**LDP\_Green\_Spaces\_Adopted\_Map**

LDP\_Green\_Spaces\_Adopted\_Map

**LDP\_Green\_Spaces\_Adopted\_Map**

LDP\_Green\_Spaces\_Adopted\_Map

**LDP\_Green\_Spaces\_Adopted\_Map**

LDP\_Green\_Spaces\_Adopted\_Map

**LDP\_Green\_Spaces\_Adopted\_Map**

LDP\_Green\_Spaces\_Adopted\_Map

**LDP\_Green\_Spaces\_Adopted\_Map**

LDP\_Green\_Spaces\_Adopted\_Map

**LDP\_Green\_Spaces\_Adopted\_Map**

LDP\_Green\_Spaces\_Adopted\_Map

© Crown copyright [and database rights], 2021. OS licence 100023386.  
Use of this data is subject to terms and conditions.

Flintshire County Council  
County Hall Raikes Lane  
Mold Flintshire CH7 6NF

3-April-2023

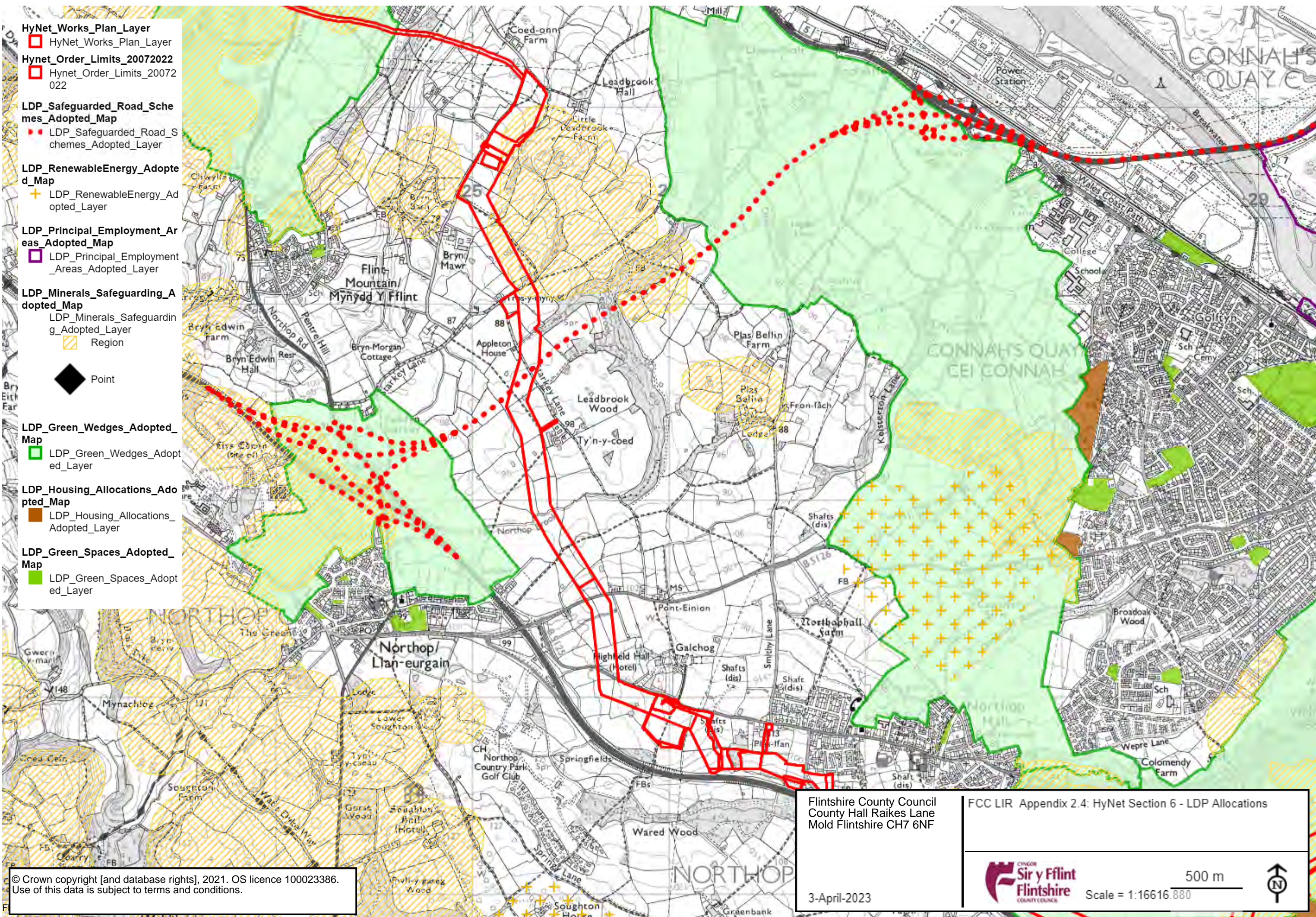
FCC LIR Appendix 2.3: HyNet Section 5b - LDP Allocations



Scale = 1:16616.880







- HyNet\_Works\_Plan\_Layer**  
HyNet\_Works\_Plan\_Layer
- Hynet\_Order\_Limits\_20072022**  
Hynet\_Order\_Limits\_20072022
- LDP\_Safeguarded\_Road\_Schemes\_Adopted\_Map**  
LDP\_Safeguarded\_Road\_Schemes\_Adopted\_Map
- LDP\_RenewableEnergy\_Adopted\_Map**  
LDP\_RenewableEnergy\_Adopted\_Map
- LDP\_Principal\_Employment\_Areas\_Adopted\_Map**  
LDP\_Principal\_Employment\_Areas\_Adopted\_Map
- LDP\_Minerals\_Safeguarding\_Adopted\_Map**  
LDP\_Minerals\_Safeguarding\_Adopted\_Map
- LDP\_Green\_Wedges\_Adopted\_Map**  
LDP\_Green\_Wedges\_Adopted\_Map
- LDP\_Housing\_Allocations\_Adopted\_Map**  
LDP\_Housing\_Allocations\_Adopted\_Map
- LDP\_Green\_Spaces\_Adopted\_Map**  
LDP\_Green\_Spaces\_Adopted\_Map
- Point

Flintshire County Council  
County Hall Raikes Lane  
Mold Flintshire CH7 6NF

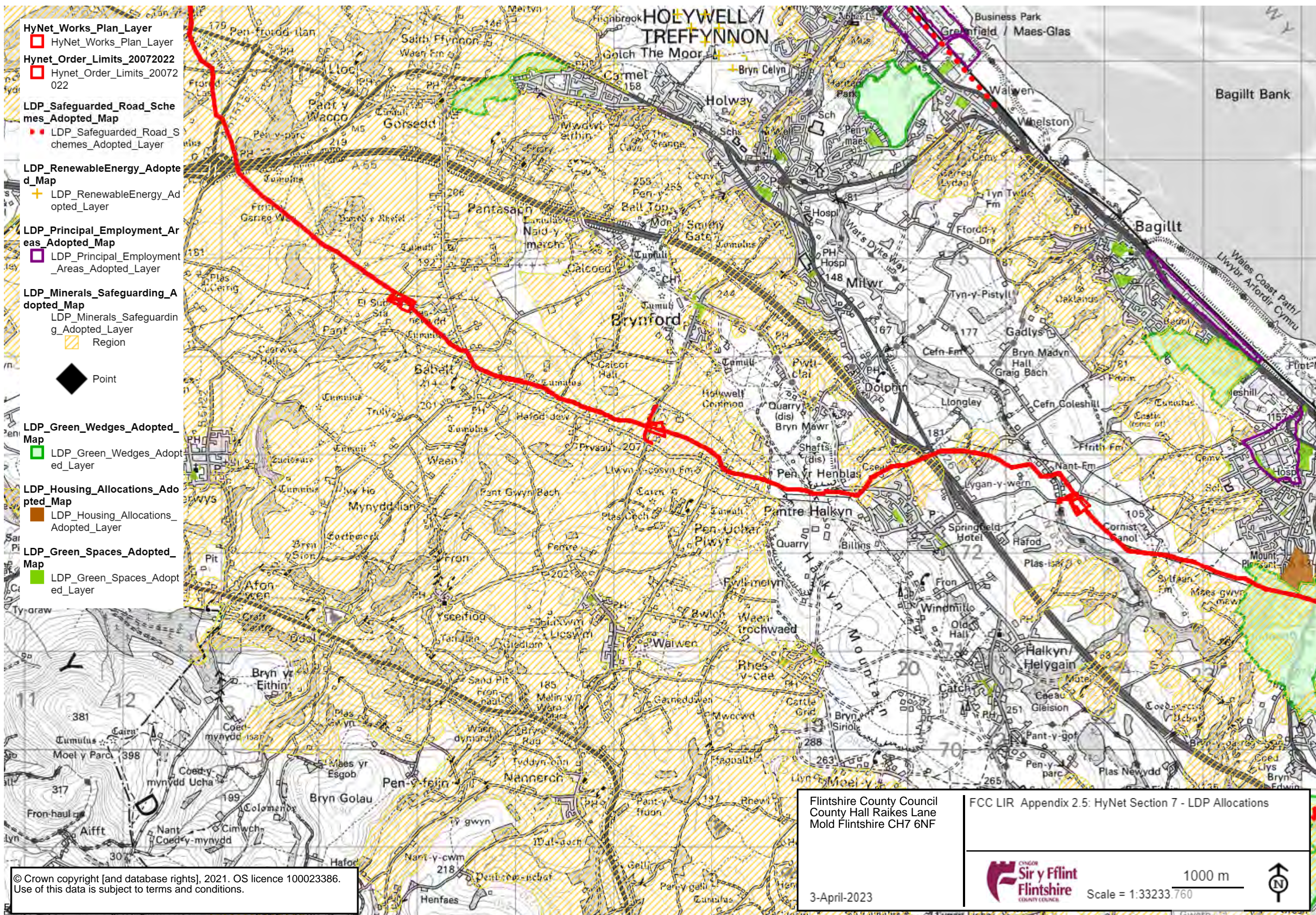
FCC LIR Appendix 2.4: HyNet Section 6 - LDP Allocations



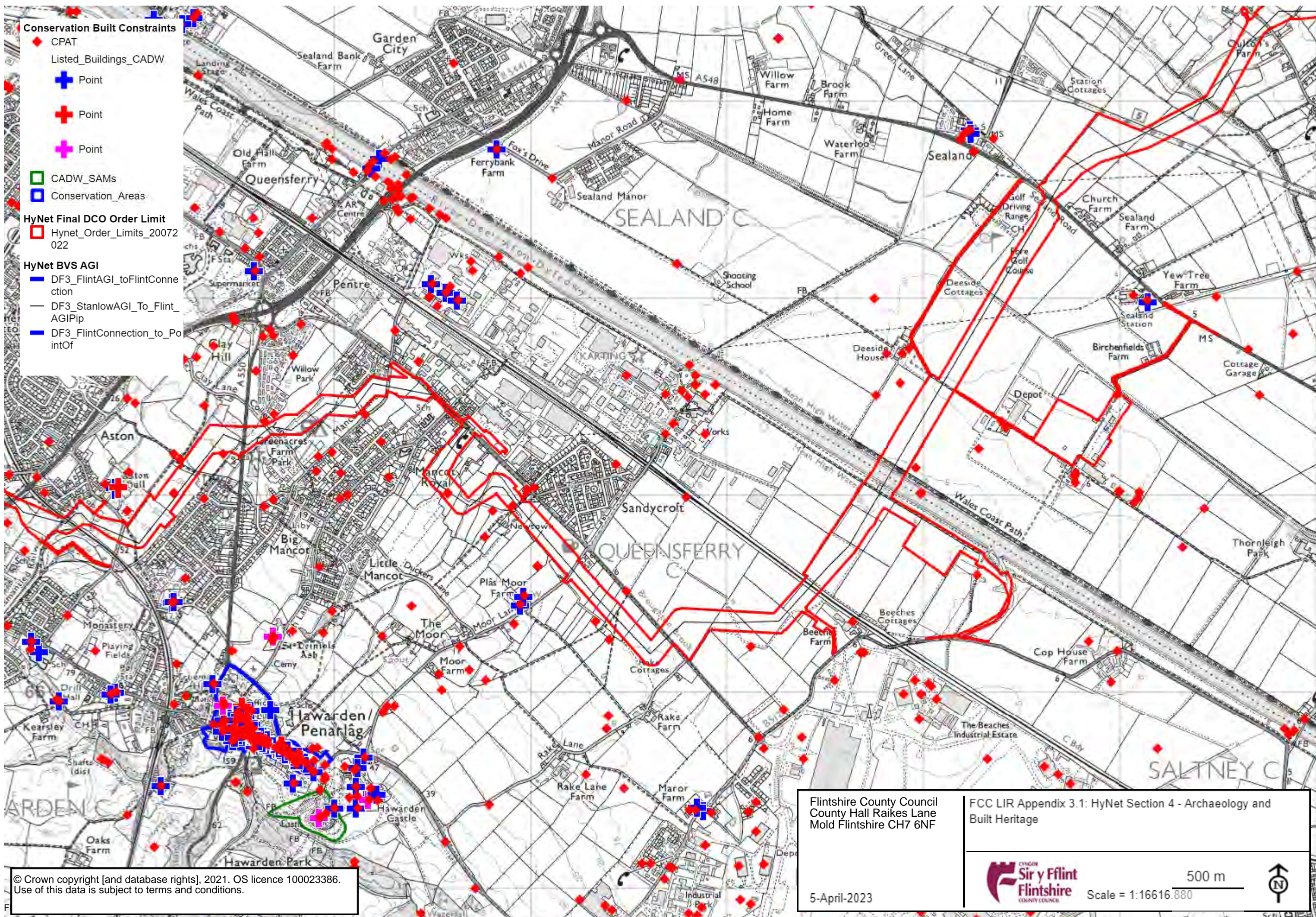
Scale = 1:16616.880



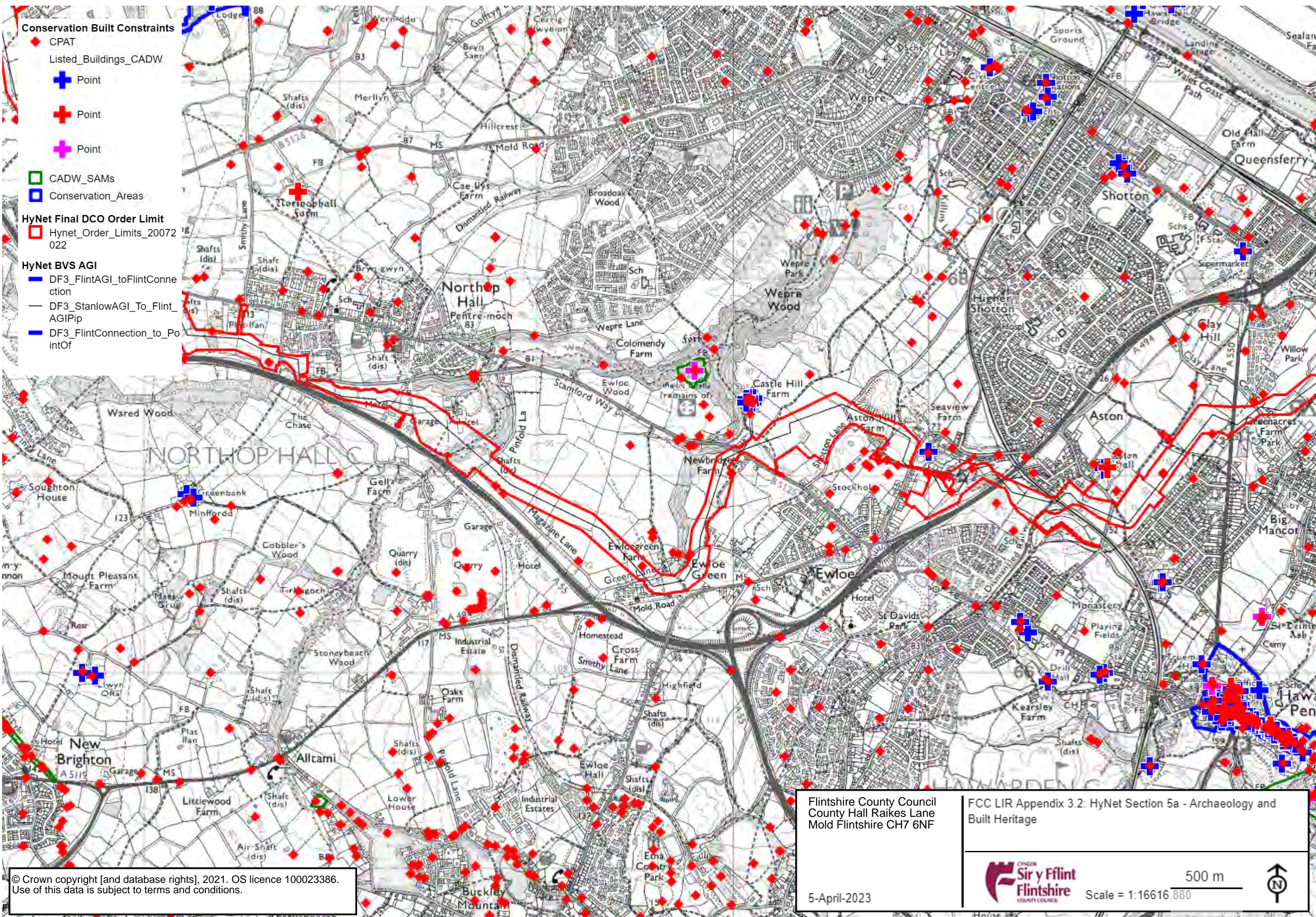












**Conservation Built Constraints**

- ◆ CPAT
- Listed\_Buildings\_CADW
- ✚ Point
- ✚ Point
- ✚ Point
- CADW\_SAMs
- Conservation\_Areas

**HyNet Final DCO Order Limit**

- HyNet\_Order\_Limits\_20072022

**HyNet BVS AGI**

- DF3\_FlintAGI\_toFlintConnection
- DF3\_StanlowAGI\_To\_FlintAGIPip
- DF3\_FlintConnection\_to\_PointOf

Flintshire County Council  
County Hall Raikes Lane  
Mold Flintshire CH7 6NF

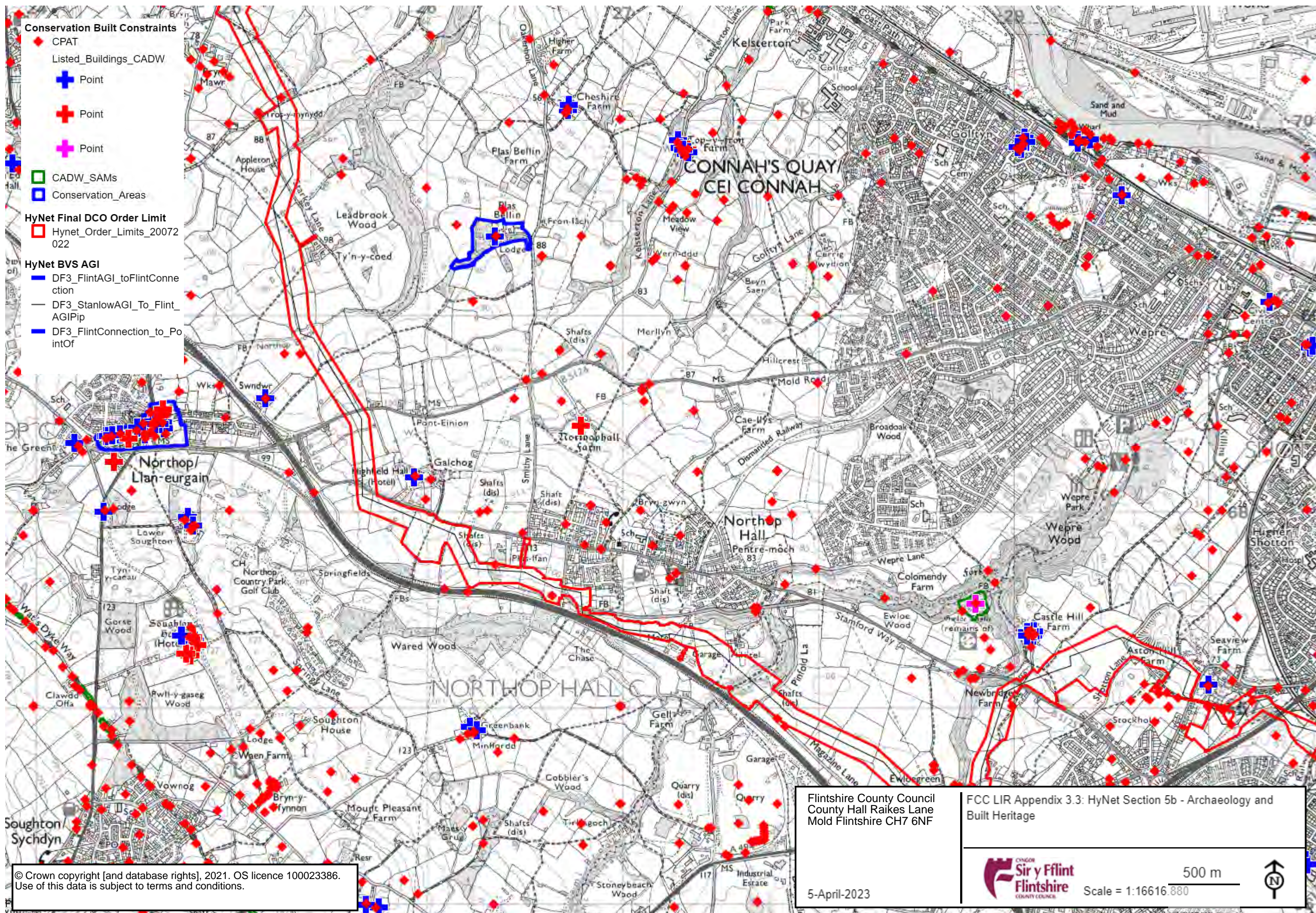
FCC LIR Appendix 3.2: HyNet Section 5a - Archaeology and Built Heritage



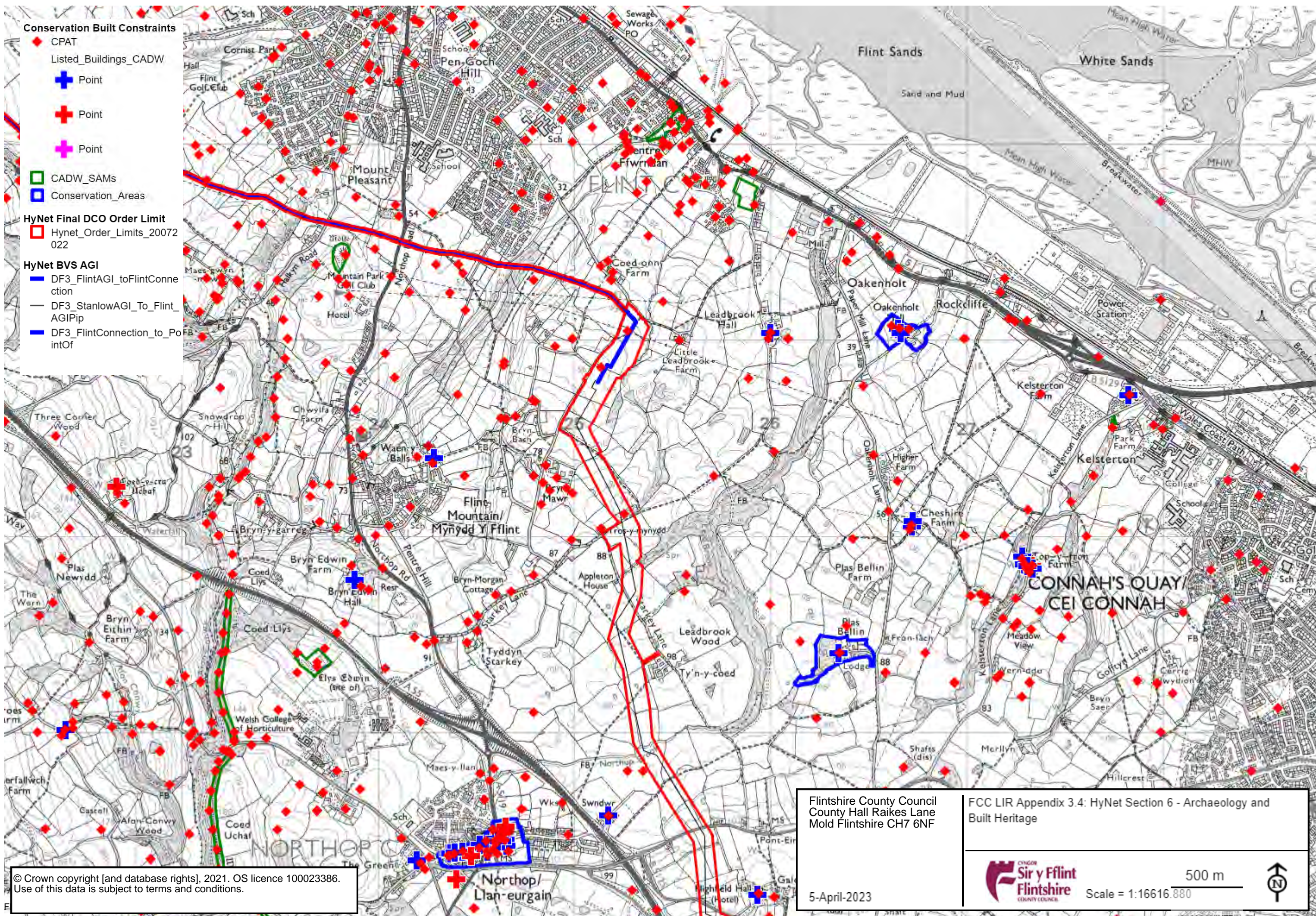
500 m  
Scale = 1:16616.880











**Conservation Built Constraints**

- ◆ CPAT
- Listed\_Buildings\_CADW
- ✚ Point
- ✚ Point
- ✚ Point
- ▭ CADW\_SAMs
- ▭ Conservation\_Areas

**HyNet Final DCO Order Limit**

- ▭ Hynet\_Order\_Limits\_20072022

**HyNet BVS AGI**

- DF3\_FlintAGI\_toFlintConnection
- DF3\_StanlowAGI\_To\_FlintAGIPip
- DF3\_FlintConnection\_to\_PoentOf

Flintshire County Council  
County Hall Raikes Lane  
Mold Flintshire CH7 6NF

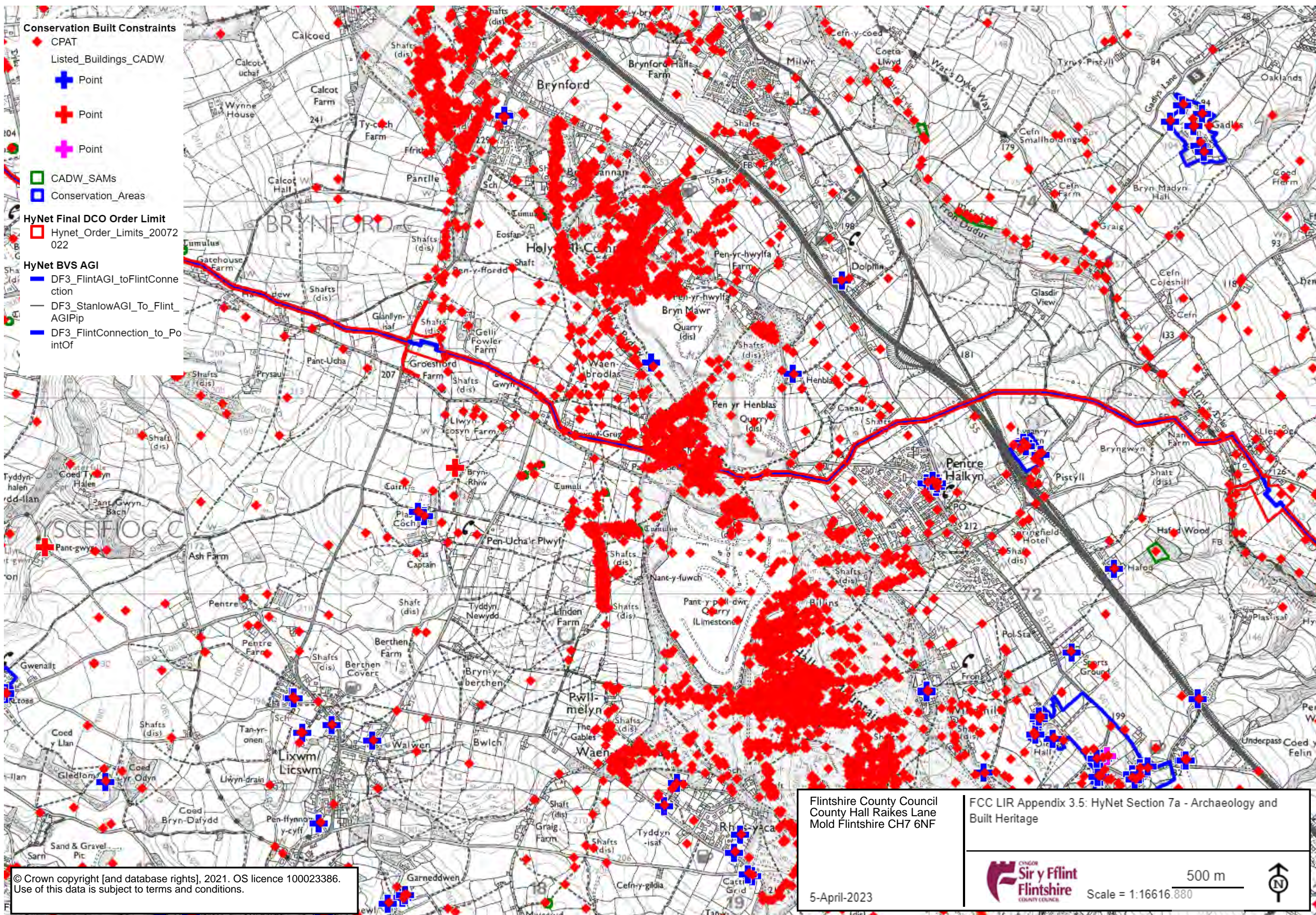
FCC LIR Appendix 3.4: HyNet Section 6 - Archaeology and  
Built Heritage



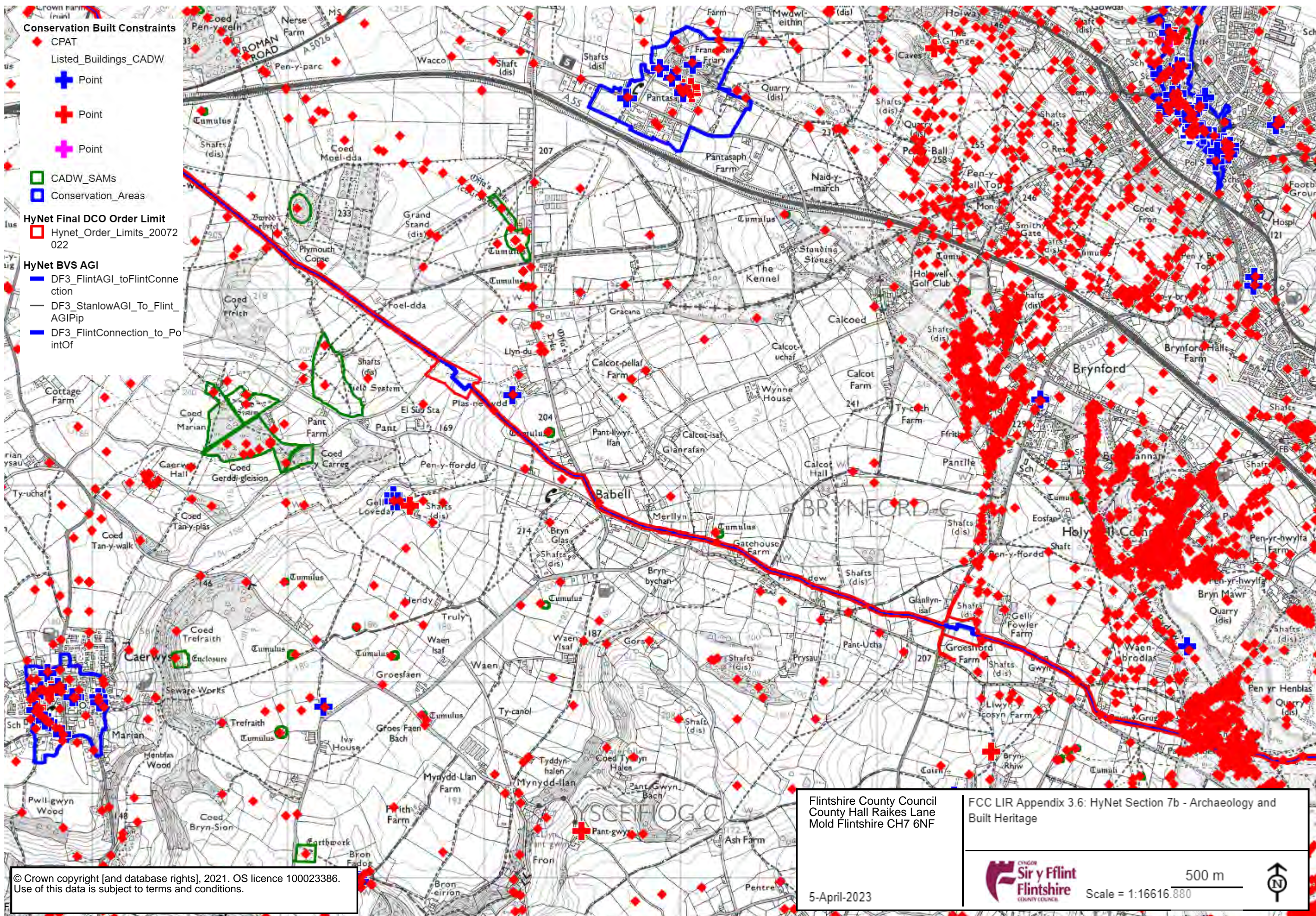
500 m  
Scale = 1:16616.880













# Constraints - Utilities

ROW\_Planning

Line

Line

Line

## HyNet Final DCO Order Limit

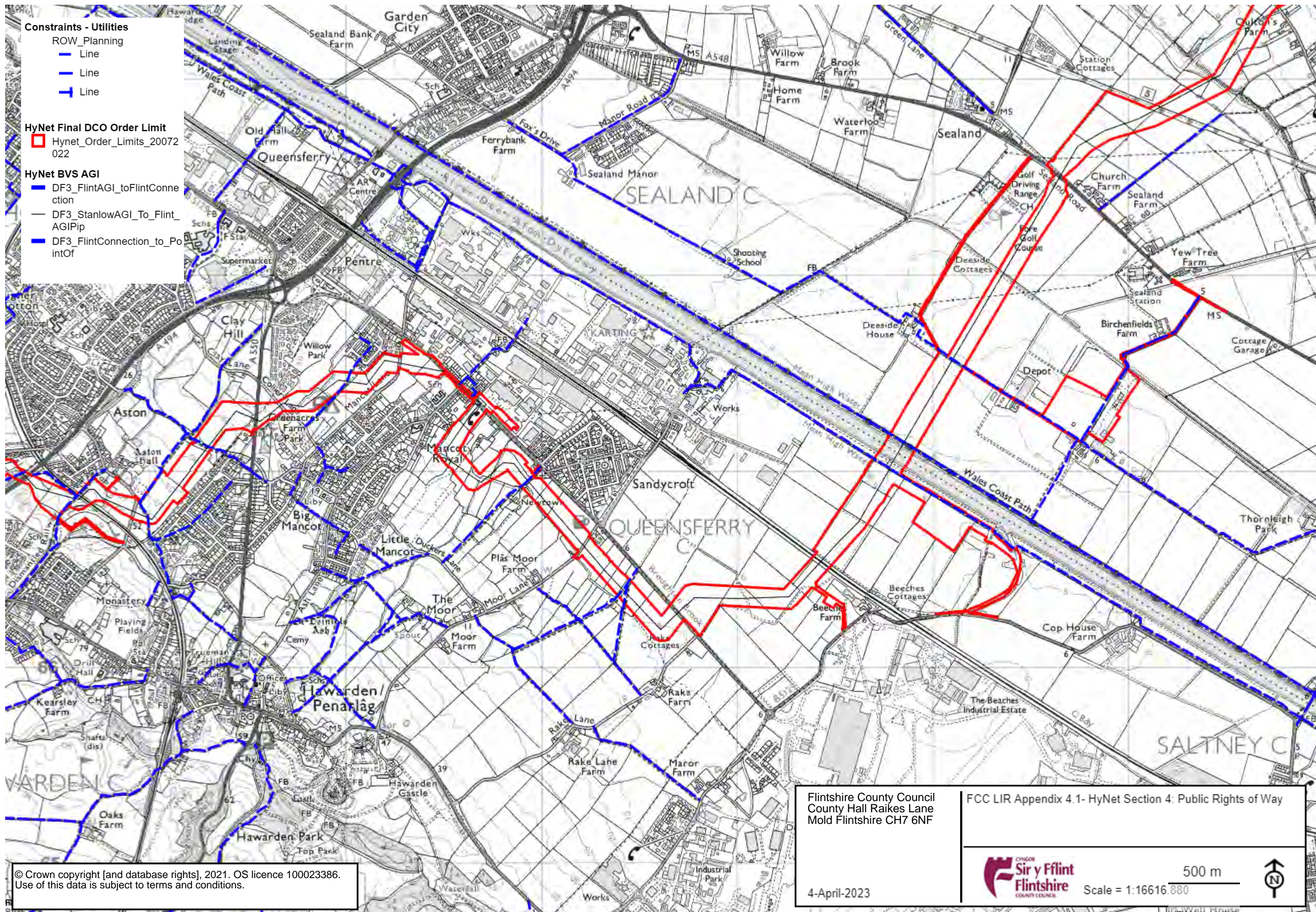
Hynet\_Order\_Limits\_20072022

## HyNet BVS AGI

DF3\_FlintAGI\_toFlintConnection

DF3\_StanlowAGI\_To\_FlintAGIPip

DF3\_FlintConnection\_to\_PointOf



Flintshire County Council  
County Hall Raikes Lane  
Mold Flintshire CH7 6NF

4-April-2023

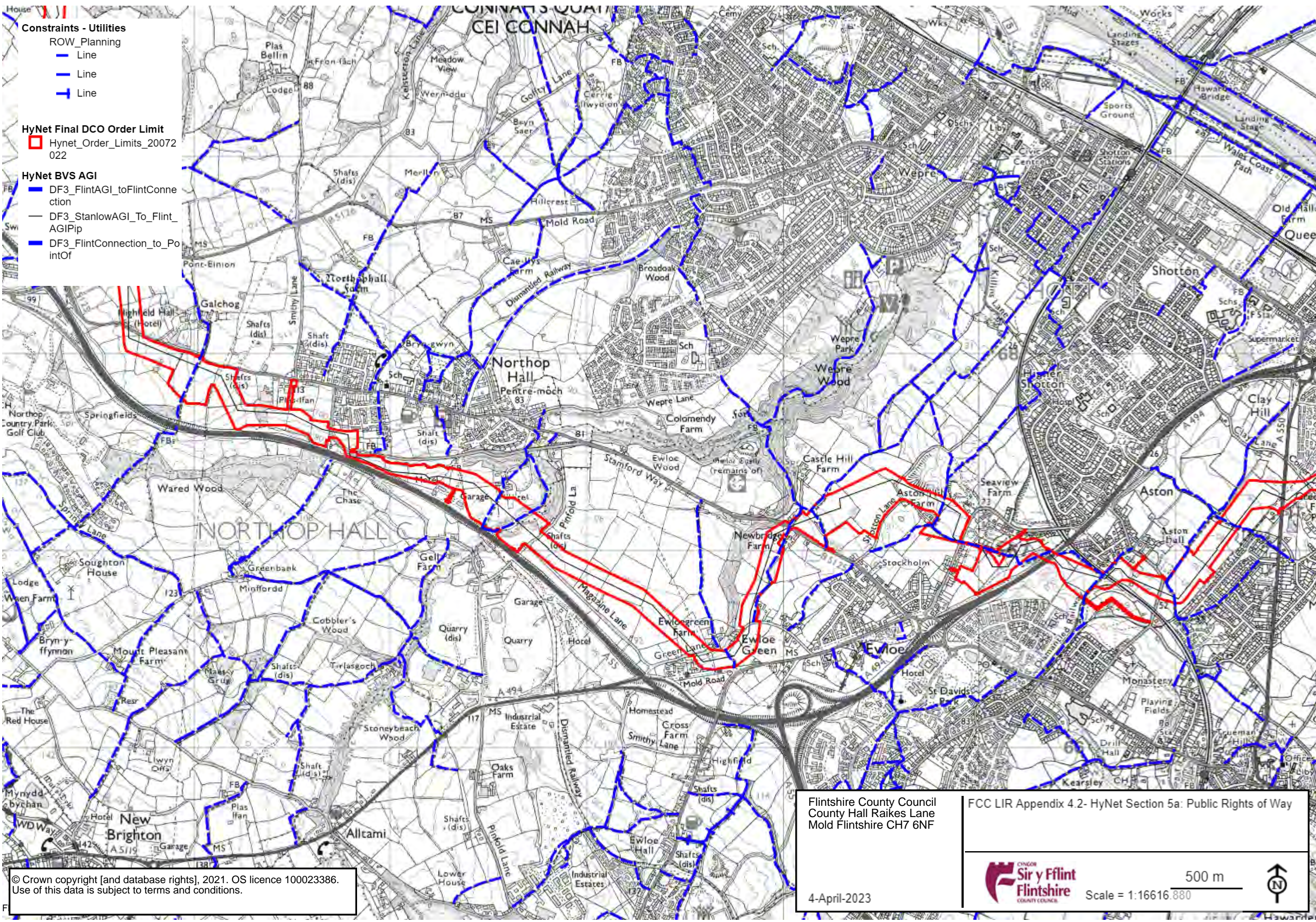
FCC LIR Appendix 4.1- HyNet Section 4: Public Rights of Way



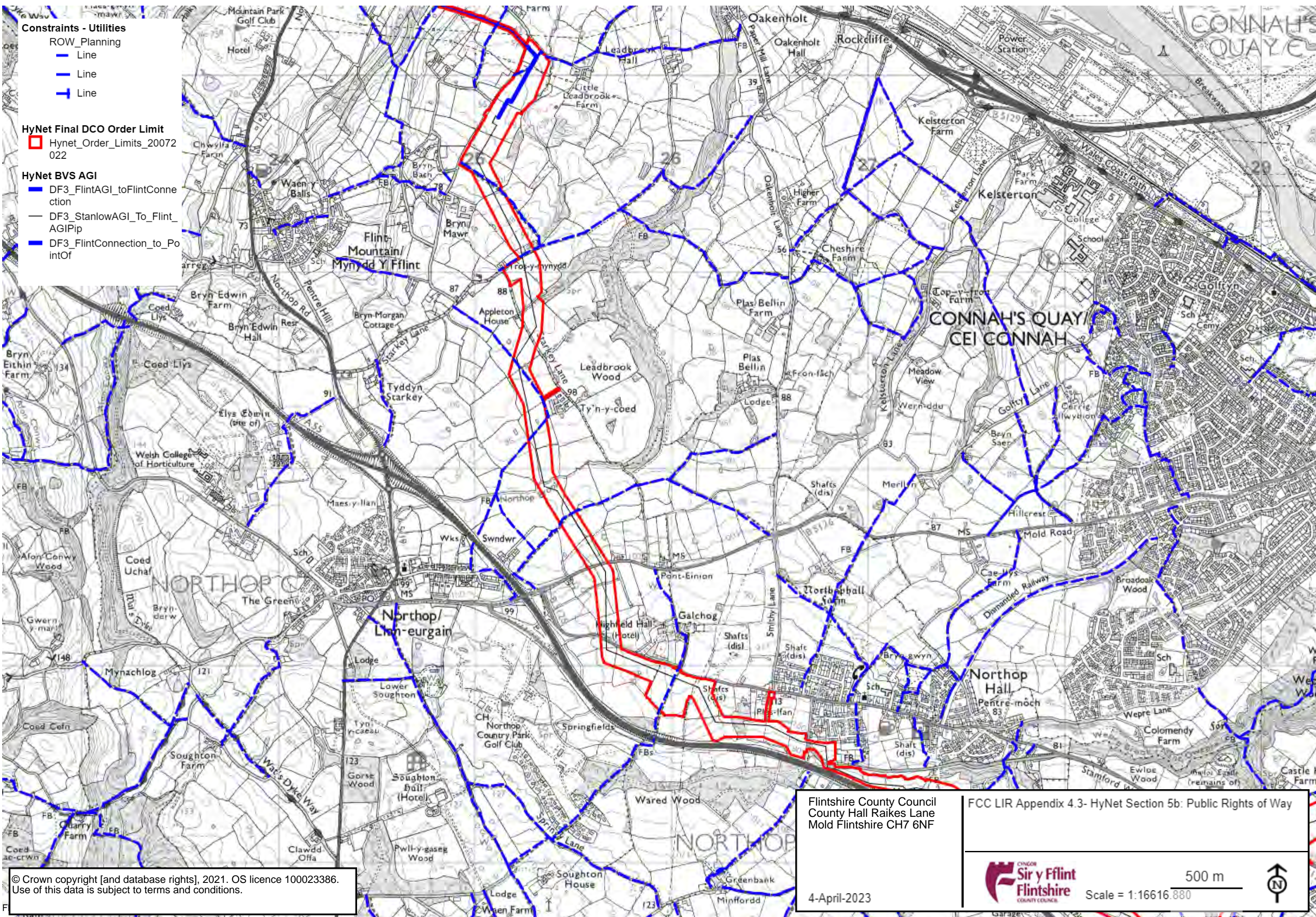
Scale = 1:16616.880











**Constraints - Utilities**

- ROW\_Planning
- Line
- Line
- Line

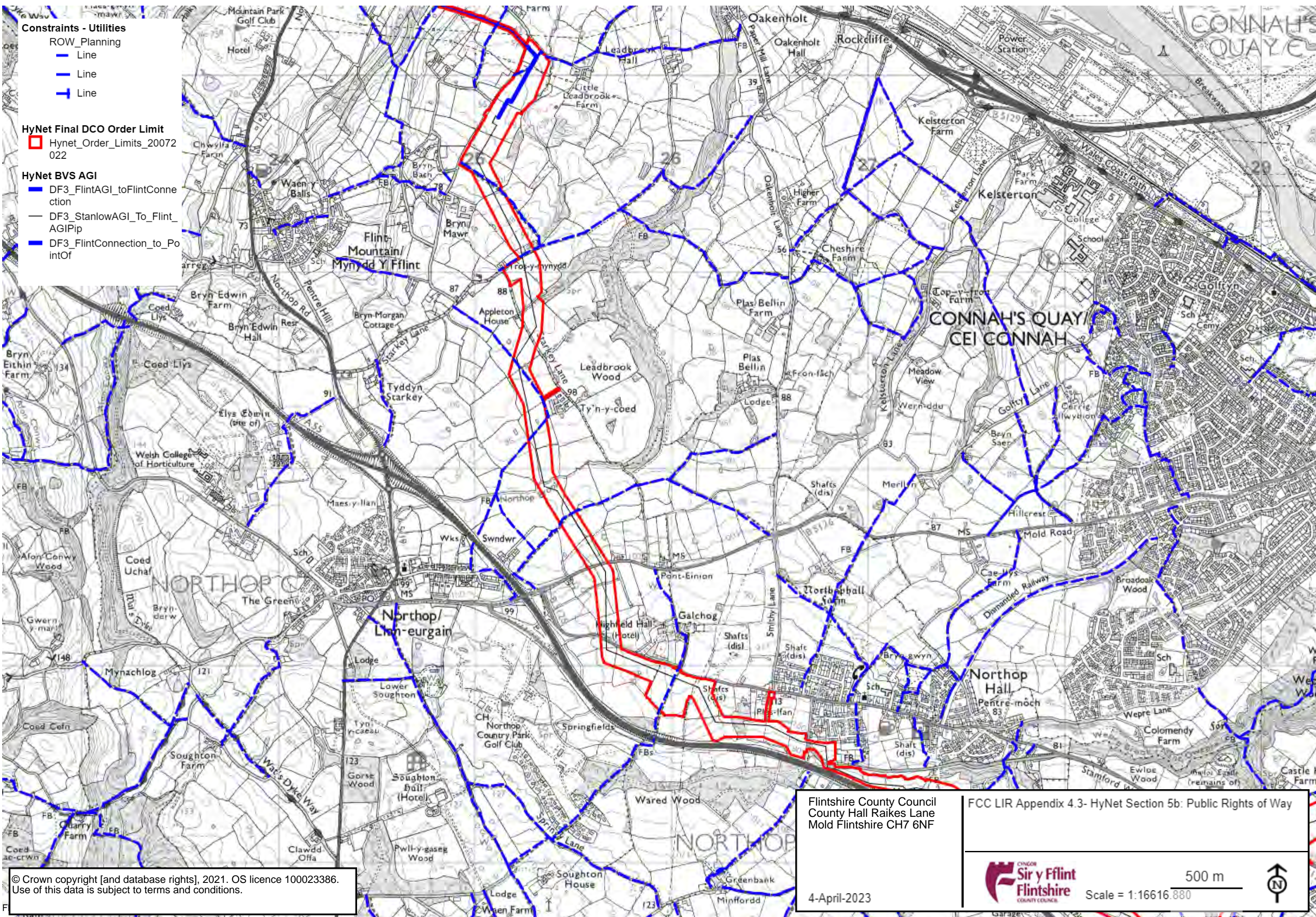
**HyNet Final DCO Order Limit**

- Hynet\_Order\_Limits\_20072022

**HyNet BVS AGI**

- DF3\_FlintAGI\_toFlintConnection
- DF3\_StanlowAGI\_To\_FlintAGIPip
- DF3\_FlintConnection\_to\_Po





**Constraints - Utilities**

- ROW\_Planning
- Line
- Line
- Line

**HyNet Final DCO Order Limit**

- Hynet\_Order\_Limits\_20072022

**HyNet BVS AGI**

- DF3\_FlintAGI\_toFlintConnection
- DF3\_StanlowAGI\_To\_Flint\_AGIPip
- DF3\_FlintConnection\_to\_Po

Flintshire County Council  
County Hall Raikes Lane  
Mold Flintshire CH7 6NF

4-April-2023

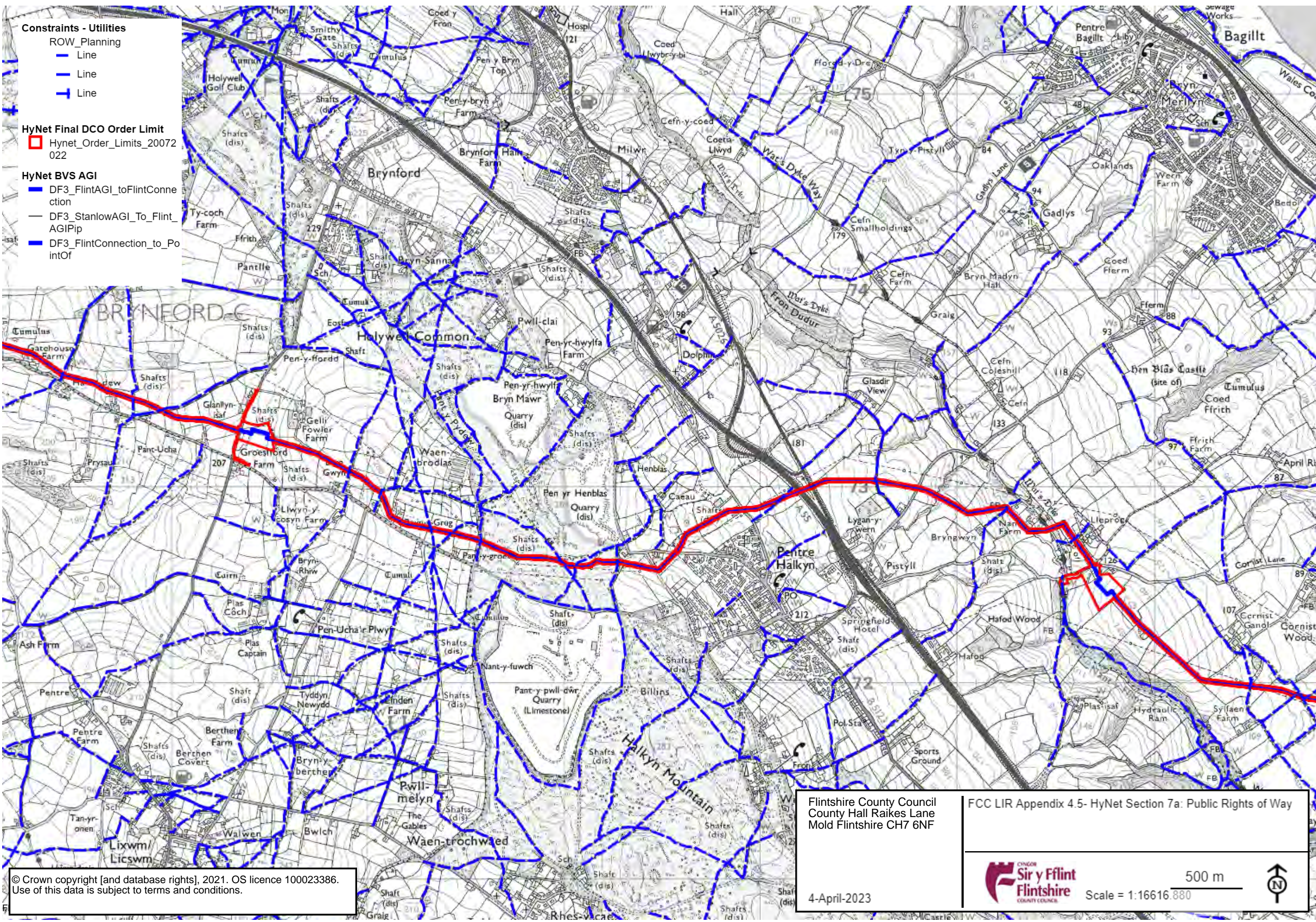
FCC LIR Appendix 4.3- HyNet Section 5b: Public Rights of Way



500 m  
Scale = 1:16616.880







**Constraints - Utilities**

ROW\_Planning

Line

Line

Line

**HyNet Final DCO Order Limit**

Hynet\_Order\_Limits\_20072022

**HyNet BVS AGI**

DF3\_FlintAGI\_toFlintConnection

DF3\_StanlowAGI\_To\_FlintAGIPip

DF3\_FlintConnection\_to\_Po  
intOf

Flintshire County Council  
County Hall Raikes Lane  
Mold Flintshire CH7 6NF

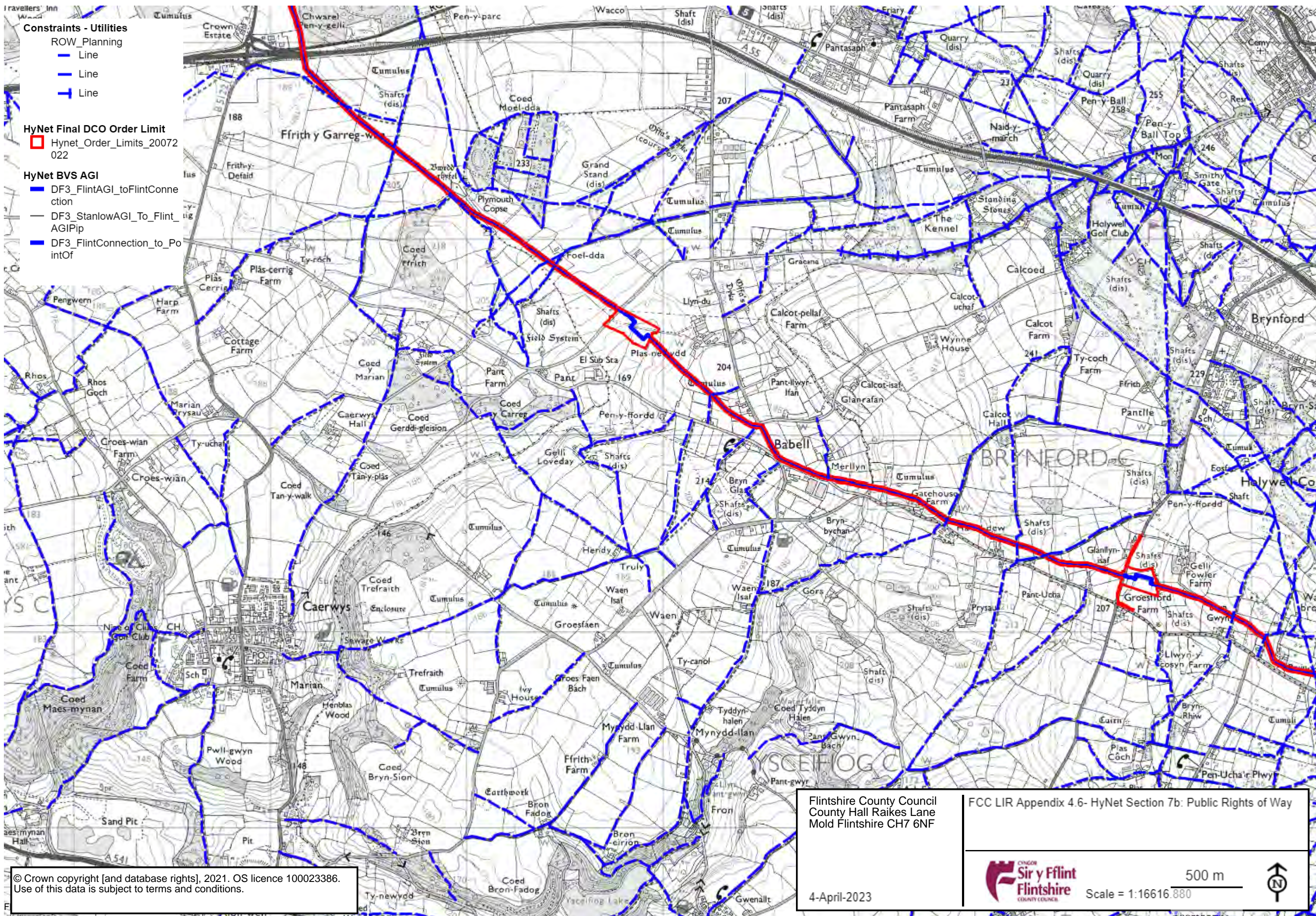
FCC LIR Appendix 4.5- HyNet Section 7a: Public Rights of Way



500 m  
Scale = 1:16616.880







Constraints - Utilities

- ROW\_Planning
- Line
- Line
- Line

HyNet Final DCO Order Limit

- Hynet\_Order\_Limits\_20072022

HyNet BVS AGI

- DF3\_FlintAGI\_toFlintConnection
- DF3\_StanlowAGI\_To\_FlintAGIPip
- DF3\_FlintConnection\_to\_Po

Flintshire County Council  
County Hall Raikes Lane  
Mold Flintshire CH7 6NF

4-April-2023

FCC LIR Appendix 4.6- HyNet Section 7b: Public Rights of Way



500 m  
Scale = 1:16616.880





- HyNet\_Works\_Plan\_Layer
- HyNet\_Order\_Limits\_20072022
- LDP\_Green\_Wedges\_Adopted\_Map

- HyNet\_Order\_Limits\_20072022
- LDP\_Green\_Wedges\_Adopted\_Map

- LDP\_Green\_Wedges\_Adopted\_Map

